

# Sunseeker

BY FOREST RIVER

MBS



GTS



A Berkshire Hathaway company.

# Sunseeker

BY FOREST RIVER



3010

*Shown in Malt Decor*



## Multi-Layered Laminated Roof System

1. Crowned Fiberglass Roof
2. Luan Decking
3. Block Foam Insulation
4. A/C Ducts
5. 1.5" Tubular Aluminum Framing
6. Interior Ceiling Material

## 2-Inch Vacuum-Bond Laminated Sidewalls

7. Decorative Interior Wall Board
8. 1.5" Tubular Aluminum Framing
9. EGS Metal Backers
10. Block Foam Insulation
11. Opening Framed In Aluminum
12. Superlite Composite - Azdel
13. Gelcoat Fiberglass Exterior

## Vacuum-Bond Laminated Floor System

14. Fiberglass Bottom Board
15. Block Foam Insulation
16. Seamless Floor Decking
17. Beauflor Flooring (In Some Areas)
18. 1.5" Aluminum Framing



*The Forest River Sunseeker is proud to be the best value Class C vehicle in the market place.*



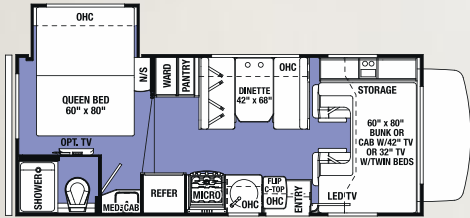
3050

*Shown in Java Decor*

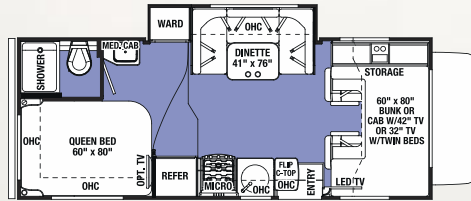
# Sunseeker

BY FOREST RIVER

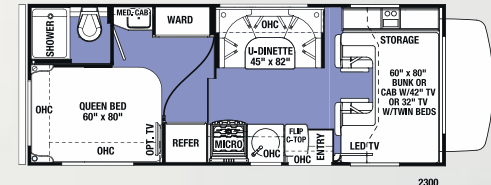
## FLOORPLANS



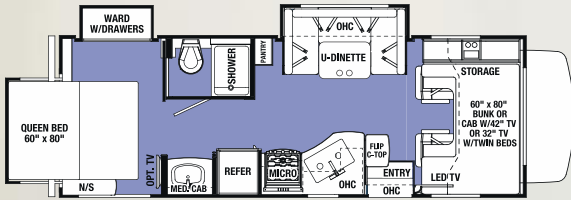
2250S LE



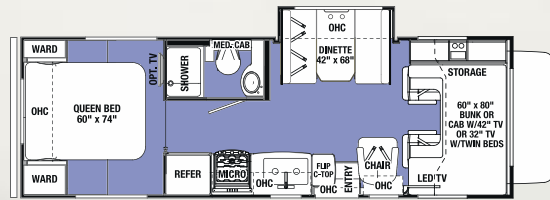
2290 S



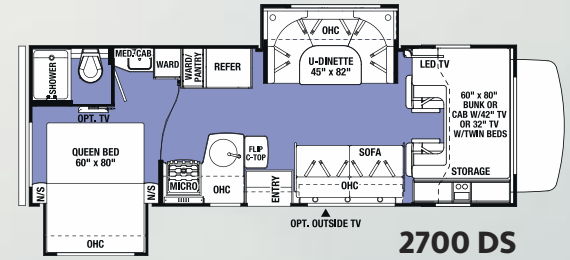
2300



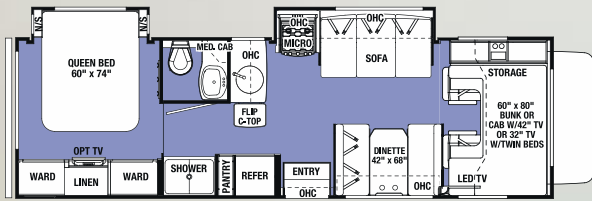
2500 TS



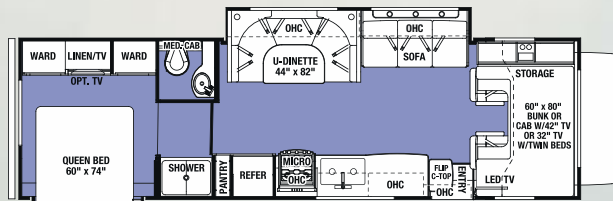
2650 S



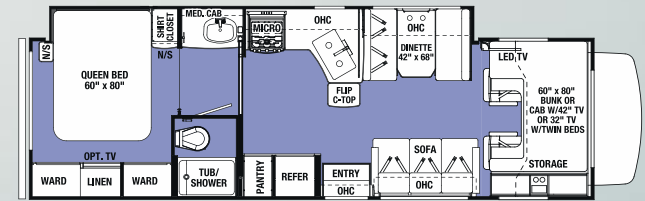
2700 DS



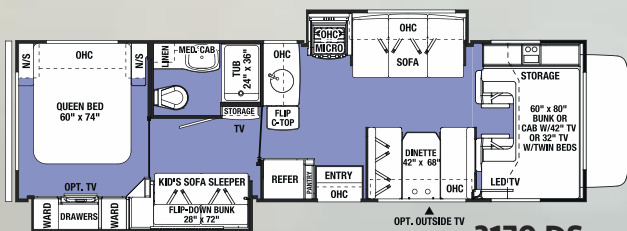
2860 DS



3010 DS

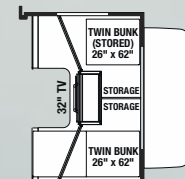


3050 S



3170 DS

## OPTIONS



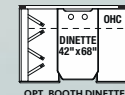
OPT. CABOVER TWIN BEDS W/32\"/>



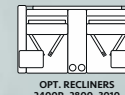
4-DOOR REFER  
OPT. SIDE-BY-SIDE REFER  
2860, 3010, 3050



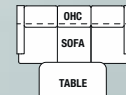
OPT. BOOTH DINETTE  
W/WARD OR PANTRY  
2700, 3010



OPT. BOOTH DINETTE  
2300, 2500



OPT. RECLINERS  
2400R, 2800, 3010



OPT. SOFA  
2250, 2500, 2650,  
2400R, 2400S

## DECORS



MALT



FLINT



JAVA



Sunseeker Ford • Chevy Chassis	2250	2290	2300	2500	2650	2700	2860	3010	3050	3170
Wheelbase	158" • 159"	158" • 159"	158" • 159"	182" • 183"	193" • NA	202" • NA	202" • 203"	220" • NA	220" • NA	220" • NA
GVWR	12500 • 14200	12500 • 14200	12500 • 14200	14500 • 14200	14500 • NA	14500 • NA	14500 • 14200	14500 • NA	14500 • NA	14500 • NA
GAWRR	8500 • 9600	8500 • 9600	8500 • 9600	9600 • 9600	9600 • NA	9600 • NA	9600 • 9600	9600 • NA	9600 • NA	9600 • NA
GAWRF	4600 • 4600	4600 • 4600	4600 • 4600	5000 • 4600	5000 • NA	5000 • NA	5000 • 4600	5000 • NA	5000 • NA	5000 • NA
UVW	9660 • 9640	0 • 10452	9950 • 9890	11721 • 11500	11100 • NA	11596 • NA	12300 • 12400	12400 • NA	12848 • NA	12500 • NA
GCWR	18500 • 20000	18500 • 20000	18500 • 20000	22000 • 20000	22000 • NA	22000 • NA	22000 • 20000	22000 • NA	22000 • NA	22000 • NA
CCC	2840 • 4560	2500 • 3748	2550 • 4310	2779 • 2700	3400 • NA	2904 • NA	2200 • 1800	2100 • NA	1652 • NA	2000 • NA
Fuel Capacity (Gal)	55 • 57	55 • 57	55 • 57	55 • 57	55 • NA	55 • NA	55 • 57	55 • NA	55 • NA	55 • NA
Hitch Rating	5000/500 • 5000/500	5000/500 • 5000/500	5000/500 • 5000/500	7500/500 • 5000/500	7500/500 • NA	7500/500 • NA	7500/500 • 5000/500	7500/500 • NA	7500/500 • NA	7500/500 • NA
Length - Bumper To Bumper	23'-10" • 24'-4"	24'-6" • 25'	24'-6" • 25'	26'-11" • 27'-5"	28'-4" • NA	28'-1" • NA	30'-9" • 31'-3"	32'-3" • NA	31'-11" • NA	32'-3" • NA
Exterior Height With A/C	11'-3"	11'-3"	11'-3"	11'-3"	11'-3"	11'-3"	11'-3"	11'-3"	11'-3"	11'-3"
Exterior Width	101"	101"	101"	101"	101"	101"	101"	101"	101"	101"
Interior Width	95.5"	95.5"	95.5"	95.5"	95.5"	95.5"	95.5"	95.5"	95.5"	95.5"
Interior Height Frt/Rear	84"/77"	84"/77"	84"/77"	84"/77"	84"/77"	84"/77"	84"/77"	84"/77"	84"/77"	84"/77"
Fresh/Grey/Black Water (Gal)	33.5/32/27	44/39/39	44/39/39	44/39/39	44/28/28	44/39/39	44/39/39	44/39/39	44/39/39	44/39/39
L.P. Capacity (Gal)	9.8	9.8	9.8	9.8	9.8	9.8	9.8	9.8	9.8	9.8
Awning Length	14'	15'-6"	15'-6"	18'	12'-6"	12'-6"	16'	15'-6"	18'	11'
Water Heater (Gal)	6	6	6	6	6	6	6	6	6	6
Exterior Storage (Cu. Ft.)	32	61	61	50	110.4	47	62.5	101.7	81.8	80

## PAINT OPTIONS

### STANDARD Exterior



### PLATINUM Full body paint



### BORDEAUX Full body paint



GVWR (Gross Vehicle Weight Rating) - is the maximum permissible weight of the unit when fully loaded. It includes all weights, inclusive of all fluids, occupants, cargo, optional equipment and accessories. For safety and product performance do NOT exceed the GVWR.

GCWR (Gross Combined Weight Rating) - is the maximum permissible loaded weight of your motor home and any towed trailer or towed vehicle. Actual GCWR of this vehicle may be limited by the sum of the GVWR and the installed hitch receiver maximum capacity rating; see hitch rating label for detail.

GAWR (Gross Axle Weight Rating) - is the maximum permissible weight, including cargo, fluids, optional equipment and accessories that can be safely supported by each axle.

UVW (Unloaded Vehicle Weight)\* - is the typical weight of the unit as manufactured at the factory. It includes all weight at the unit's axle(s), including full fuel, all fluids and LP Gas. The UVW does not include cargo, fresh potable water, additional optional equipment or dealer installed accessories.

CCC (Cargo Carrying Capacity)\*\* - is the amount of weight available for fresh potable water, cargo, passengers, additional optional equipment and accessories. CCC is equal to GVWR minus UVW. Available CCC should accommodate fresh potable water (8.3 lbs. per gallon). Before filling the fresh water tank, empty the black and gray tanks to provide for more cargo capacity.

\*Estimated Average based on standard build optional equipment. \*\* Estimated average based on standard build optional equipment.

Each Forest River RV is weighed at the manufacturing facility prior to shipping. A label identifying the unloaded vehicle weight of the actual unit and the cargo carrying capacity is applied to every Forest River RV prior to leaving our facilities. The load capacity of your unit is designated by weight, not by volume, so you cannot necessarily use all available space when loading your unit. Actual towing capacity is dependent upon your particular loading and towing circumstances, which includes the GVWR, GAWR and GCWR as well as adequate trailer brakes. Please refer to the Operator's Manual of your vehicle for further towing information.



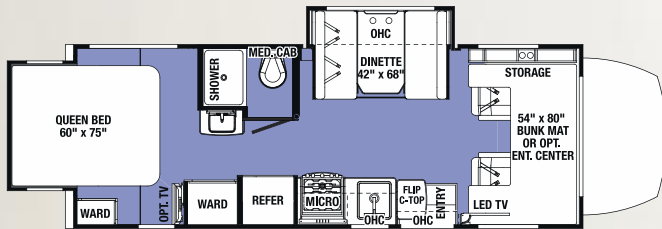
Sunseeker  
BY FOREST RIVER



MBS

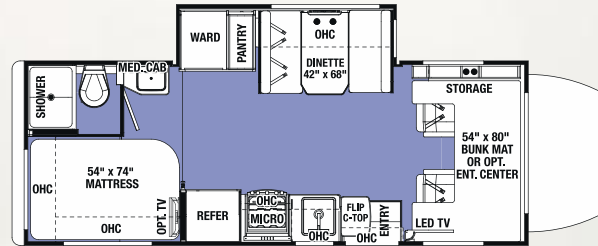
MERCEDES BENZ SERIES

The quality you've come to expect, paired with a fuel efficient diesel platform.



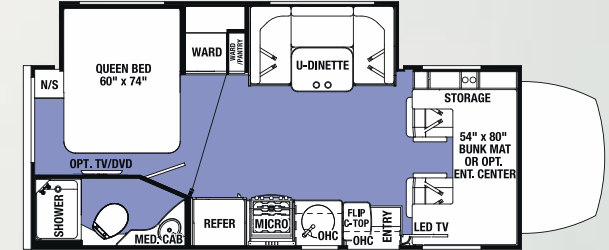
MBS 2400 R

Shown in Malt Decor



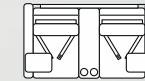
MBS 2400 S

NEW! Optional Trekker Low Profile Fiberglass front cap with built-in entertainment center IPO overhead bunk mat.

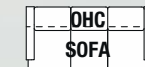


MBS 2400 W

2400W



OPT. RECLINERS  
2400R



TABLE

OPT. SOFA  
2400R, 2400S

### BlueTec Diesel Engine

BlueTec SCR Technology is one of the world's cleanest diesel engines, delivering more power, while producing fewer emissions. The 3.0L V-6 engine boasts 188 hp and 325 lb-ft of rated torque.

Sunseeker MBS	2400R	2400S	2400W
Wheelbase	170.3	170.3	170.3
GVWR	11030	11030	11030
GAWRR	7720	7720	7720
GAWRF	4080	4080	4080
UVW	9852	9700	9924
GCWR	15250	15250	15250
CCC	1178	1330	1106
Fuel Capacity (Gal)	26.4	26.4	26.4
Hitch Rating	4200/350	4200/350	4200/350
Length - Bumper To Bumper	24'-11"	24'-8"	24'-11"
Exterior Height With A/C	11'-3"	11'-3"	11'-3"
Exterior Width	94.5"	94.5"	94.5"
Interior Width	91"	91"	91"
Interior Height Frt/Rear	81"/74"	81"/74"	81"
Fresh/Grey/Black Water (Gal)	35/30/30	35/33/33	35/32/32
L.P. Capacity (Gal)	9.8	9.8	9.8
Awning Length	16'	15'-6"	16'
Water Heater (Gal)	6	6	6
Exterior Storage (Cu. Ft.)	75	67	50.3

Please see page 5 for chart definitions.



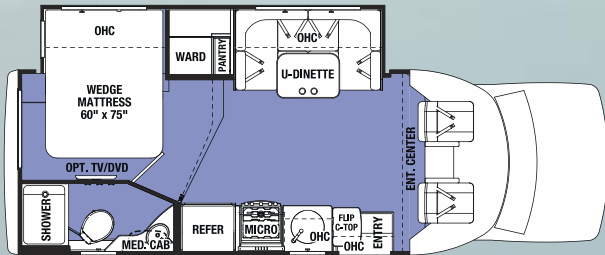
2430S



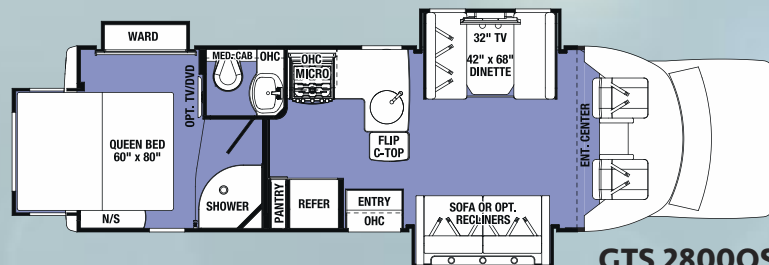
**GTS GRAND TOURING SERIES**

Shown in Flint Decor

The streamlined GTS is the perfect vehicle for the ultimate getaway.



GTS 2430S



GTS 2800QS

Sunseeker GTS	2430	2800
Wheelbase	176"	212"
GVWR	14500	14500
GAWRR	9600	9600
GAWRF	5000	5000
UVW	10920	11596
GCWR	22000	22000
CCC	3580	2904
Fuel Capacity (Gal)	55	55
Hitch Rating	7500/500	7500/500
Length - Bumper to Bumper	25'-9"	30'-4"
Exterior Height with A/C	10'-8"	10'-8"
Exterior Width	97"	97"
Interior Width	91"	91"
Interior Height Front/Rear	81"/75.5"	81"/75.5"
Fresh Water (Gal)	42/39/39	43/42/28
L.P. Capacity (Gal)	9.8	9.8
Awning Length	15'-6"	18"
Water Heater (Gal)	6	6
Exterior Storage (Cu. Ft.)	37.8	73

Please see page 5 for chart definitions.

WARRANTY	SS	GTS	MBS	LE
12 Months/12,000 mile basic limited warranty	S	S	S	S
Chassis warranty (see owners manual)				
SYSTEMS	SS	GTS	MBS	LE
Battery disconnect	S	S	S	S
Water heater bypass	S	S	S	S
(2) Deep cycle coach batteries	S	S	S	S
"Easy Access" battery in step-well	S	S	S	S
30 Amp service with detachable cord	S	S	S	S
60 Amp Progressive Dynamics Converter	S	S	S	S
6 Gallon DSI gas/electric water heater	S	S	S	S
30,000 BTU furnace	S	S	S	S
Emergency start switch	S	S	—	S
Satellite/cable connection	S	S	S	S
13,500 BTU ceiling ducted roof air	S	S	S	S
4.0 KW Onan Microquiet generator	S	S	—	S
3.6 KW Onan LP Generator	—	—	S	—
Automatic generator transfer switch	S	S	S	S
Firestone Ride-Rite air helper springs	S	S	—	—
Hellwig sway bar	—	—	S	—
Water filtration system	S	S	S	—
Heated, enclosed holding tanks & valves	S	S	—	—
Arctic Package (12V tank heaters)	O	O	S	O
15K BTU A/C with heat pump	O	O	O	—
CO <sub>2</sub> , LP and smoke detector	S	S	S	S
Jack digital antenna	S	S	S	S
EXTERIOR	SS	GTS	MBS	LE
2" Aluminum framed laminated sidewalls	S	S	—	S
1.5" Aluminum framed laminated sidewalls	—	—	S	—
Azdel Superlight composite substrate	S	S	S	S
Gel Coat exterior fiberglass	S	S	S	S
Block foam insulation	S	S	S	S
Power patio awning with LED light strip	S	S	S	S
Slide-out awnings	S	S	S	S
Fiberglass roof	S	S	S	S
One-piece fiberglass front cap	S	S	S	S
LED exterior lights	S	S	S	S
Stainless steel wheel liners	S	S	S	S
Valve stem extensions	S	S	S	S
Roto-cast storage compartments	S	S	S	S
Driver side security light	—	—	S	—
Aluminum running boards	S	—	—	O
Fiberglass running boards	—	S	S	—
110V, GFI protected exterior receptacle	S	S	S	S
Tinted sliding windows	S	—	—	S
Tinted frameless windows	—	S	S	—
Heated, remote exterior mirrors	S	S	S	S
7,500 Lbs. hitch, 7-pin connector (E450)	S	S	—	—
5,000 Lbs. hitch, 7-pin connector (Chevy/E350)	S	S	—	S
4,200 Lbs. hitch, 7-pin connector	—	—	S	—
Spare tire	S	S	S	—
Roof ladder (N/A 2400R)	S	—	S	S
Integrated entry step	S	S	—	S
Power entry step	—	—	S	—
Outside shower	S	S	S	—
Automatic leveling system (4-point)	O	O	—	O
Stabilizer jacks (2-point)	—	—	O	—
Full body paint	O	O	O	—
32" Outside 12V TV with DVD and speakers (2700DS, 3010DS, 3050S, 3170DS only)	O	O	—	—
Exterior grill with quick connect (standard 2860DS)	O	O	O	—
Black tank flush	O	O	O	—

CAB AREA	SS	GTS	MBS	LE
7" Touch screen radio with USB and Bluetooth	S	S	S	S
Sirius tuner and antenna	S	S	S	S
Cab area privacy curtain	S	S	S	S
Ultra leather driver and passenger seats	O	O	S	—
Power windows and door locks	S	S	S	S
Keyless entry (N/A Chevy)	S	S	S	S
Color back-up camera with rear view monitor	O	O	O	O
Side view cameras	O	O	O	—
GPS navigation system	S	S	S	S
Wood grain dash	—	—	S	—
Removable cab mat	—	—	S	—
Swivel driver seat (n/a Chevy, Power)	O	O	S	—
Power driver seat (Ford only)	O	O	—	—
Swivel passenger seat (N/A Chevy)	O	O	S	—
KITCHEN	SS	GTS	MBS	LE
High-neck faucet	S	S	—	S
High-neck faucet with pull out sprayer	—	—	S	—
Recessed 3-burner range with flush glass cover	S	S	S	S
Range hood with fan and light	S	S	S	S
Oven IPO drawer	S	O	O	S
Microwave oven	S	—	—	S
Convection microwave (Standard in 3050S)	O	S	S	—
6 Cu. ft. double door refrigerator	S	S	S	S
12 Cu. ft. four door refrigerator with ice maker (2860DS, 3010DS, 3050S)	O	—	—	—
Raised wood refrigerator panel (N/A 12 cu. ft.)	O	O	S	—
Full extension ball bearing drawer guides	S	S	S	S
Flip-up countertop extension	S	S	S	S
BATHROOM	SS	GTS	MBS	LE
Lightweight composite toilet with hand sprayer	S	S	S	S
Glass shower door	S	S	—	S
Lightweight Arcadia shower door	—	—	S	—
Towel bar, tissue, toothbrush and soap holder	S	S	S	S
Electric roof fan	S	S	S	S
Shower head with flexible extension	S	S	S	S
Shower skylight	S	S	S	S
BEDROOM	SS	GTS	MBS	LE
Upgraded memory foam mattress	S	S	S	S
Bedspring	S	S	S	S
Black out roller shades	S	S	S	S
Bedroom TV with DVD	O	O	O	—
LIVING ROOM	SS	GTS	MBS	LE
Dream dinette (N/A with U-shape dinettes)	S	S	S	—
Visionary pull out sofa (60" x 74") (3010DS)	S	—	—	—
32" 12V flat panel adjustable side TV	S	S	S	S
Cab over cabinets with 42" TV (IPO side TV)	O	—	O	O
Cab over folding twin beds with 32" 12V TV (IPO side TV)	O	—	—	O
Surround sound	S	S	S	S
Child seat head tethers in dinette	S	S	S	—
Maxx Air fan in living room	S	S	S	S
LED lighting throughout	S	S	S	S
Dual recliners IPO Sofa (3010DS, 2800QS)	O	O	—	—
12V USB charging station	S	S	S	—

For more information please visit:  
www.forestriverinc.com/sunseeker  
914 CR 1 • Elkhart, IN 46514  
574.262.2212 • 800.445.2825

**FREE MEMBERSHIP**  
to Forest River Owners' Group  
[www.forestriverfrog.com](http://www.forestriverfrog.com)




### PRE-DELIVERY INSPECTION FACILITY

20,000 square feet of quality assurance. The bare essentials for a premium product. This state-of-the-art facility gives immediate daily feedback to production for quality assurance in every unit built.



Forest River, Inc. encourages our customers to purchase their Forest River products from a local dealership whenever possible for the following reasons:

- 1) Forest River, Inc. dealers are independently owned and operated businesses so priority service and scheduling is at their discretion and is often provided to customers that purchased their unit at that dealership.
- 2) Purchasing locally allows customers to establish meaningful relationships with a dealer, enhancing the RV experience through assistance with product questions, user tips or RV regulations for your state or country, and much more!
- 3) Canadian customers must meet requirements to bring an RV purchased out of the country to their home. These requirements may involve additional inspections and certifications, taxes and fees. Your local Canadian Dealer is a professional at meeting these requirements.
- 4) Scheduling timely warranty repairs and adjustments through a local dealership provides far greater flexibility and convenience to you, the customer!

It is the goal of Forest River, Inc. that all of our RV owners fully enjoy the RV experience and that customer satisfaction meets or exceeds their expectations!

### 24/7 EMERGENCY ROADSIDE ASSISTANCE

For a worry-free ownership experience Forest River includes one year of Coach-Net RV Technical & Roadside Assistance with each RV purchase. Whether new to the RV lifestyle or an experienced RV enthusiast, Forest River owners have 24/7 access to technical, operational and emergency road service coverage throughout the US & Canada. Coach-Net's fast, dependable service is just a phone call away.

**Coach-Net<sup>®</sup>**

RV Technical & Roadside Assistance



Learn More  
Scan this barcode using a QR Reader on your smart phone to learn more about Forest River.



A Berkshire Hathaway company.

All information contained in this brochure is believed to be accurate at the time of publication. However, during the model year, it may be necessary to make revisions and Forest River, Inc., reserves the right to make all such changes without notice, including prices, colors, materials, equipment and specifications as well as the addition of new models and the discontinuance of models shown in this brochure. Therefore, please consult with your Forest River dealer and confirm the existence of any materials, design or specifications that are material to your purchase decision ©2016 Sunseeker - a Division of Forest River, Inc. - a Berkshire Hathaway Company 4/16

Your Local Sunseeker Dealer